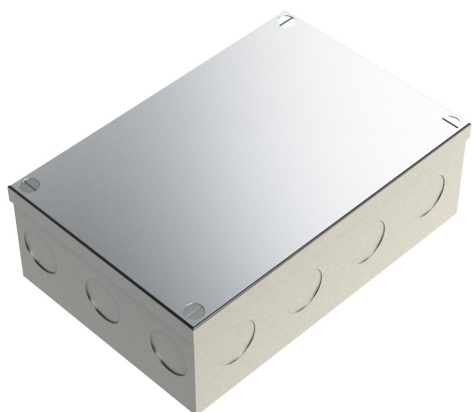


**PRODUCT CODE: AB10G-K**  
ADAPTABLE BOX - KNOCKOUT



#### DESCRIPTION

150 x 100 x 50mm (6 x 4 x 2") Adaptable Box with Knock-outs

#### FINISH

Pre Galvanised

#### MATERIAL

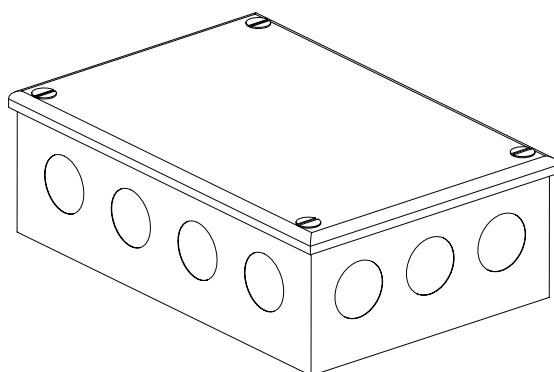
Galvanised Sheet Steel

#### PACKAGING

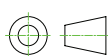
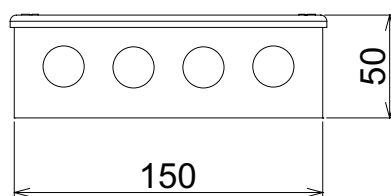
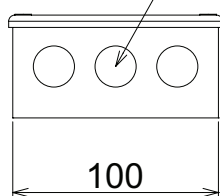
Packed in qty 5 (can be purchased individually)

#### ADDITIONAL NOTES

Comprises body, flanged cover and M5 x 10mm lid fixing screws  
Knock outs - 3 x 20mm (end face ) 4 x 20mm (side face)  
Compliant to LU Standard 1-085 (for use on surface & sub-surface locations)



20mm KNOCKOUT 14 PLACES



Values are nominal and with a general tolerance  $\pm 5\%$  unless otherwise specified